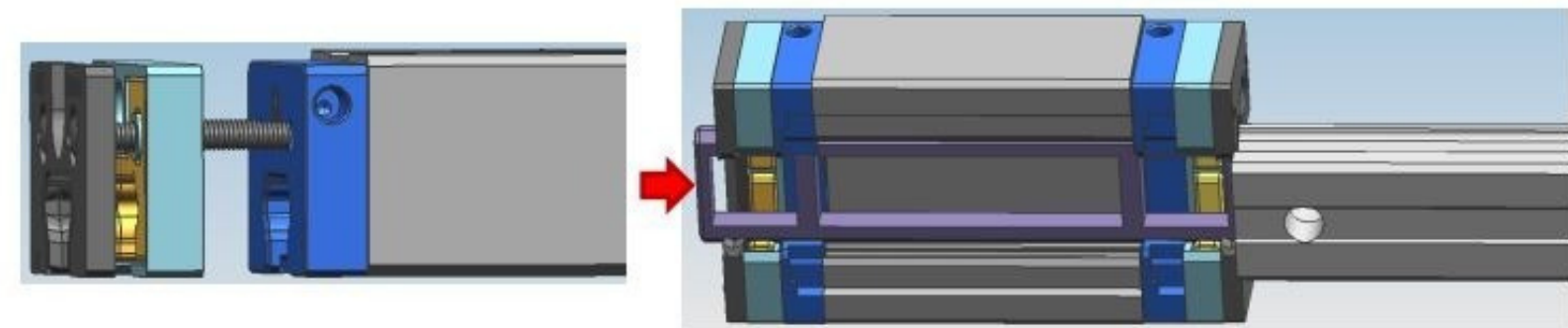


INSTRUCTION MANUAL OF
SELF- LUBRICATING DEVICE G1

INSTRUCTION MANUAL OF LINEAR GUIDEWAY SELF-LUBRICATING DEVICE G1



Operating Instructions

1

2

To maintain the best performance of the G1 self-lubricating device, please follow the instructions below:

1. Operating Instructions –

First, wipe off the rust-preventive oil from the slide block and guide rail, then use a plastic dummy rail to gently slide the slide block into the guide rail.

2. Operating Temperature Range – Maximum operating temperature:

50 °C Instantaneous maximum temperature: 80°C

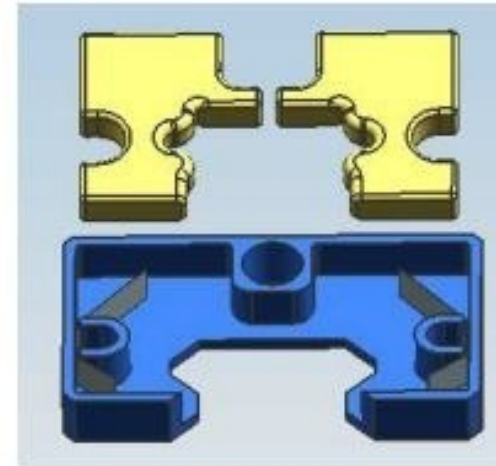
3. Avoid contact with chemicals – Alcohols, alkanes, and rust-preventive oils, as well as any organic solvents with degreasing properties

(these can dilute the lubricant inside the device, reducing its lubricating ability)

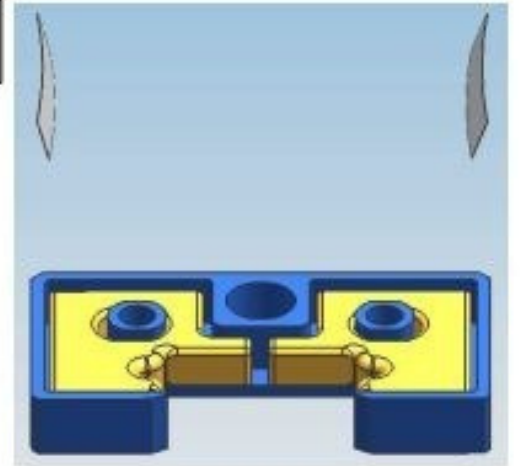


Water-based cutting fluids, oil-based cutting fluids, lubricants, and greases (mineral oil, synthetic oil) do not affect usage.

A Series



B Series



SELF-LUBRICATING G1 Block installation steps

MSA Series (Refer to the upper-left illustration)

First, insert two spring plates (gray) into the left and right sides of the oil reservoir cover (blue).

Next, gently position and press in two oil blocks (yellow) so that they rest against the spring plates.

After assembly, due to the pressure exerted by the spring plates, the oil blocks will be held tightly against the linear rail.

MSB Series (Refer to the upper-right illustration)

First, install two oil blocks (yellow) into the oil reservoir cover (blue). Then, insert two spring plates (gray) into the gaps on both the left and right sides.

After assembly, due to the pressure exerted by the spring plates, the oil blocks will be held tightly against the linear rail.



PRECISION MOTION INDUSTRIES, INC

No.71,Ln.20,Dafu Rd., Shengang Dist.,
Taichung City 42946, Taiwan

TEL +886-4-2528 2984

FAX +886-4-2528 3392

MAIL pmi-info@pmi-amt.com.tw



www.pmi-amt.com